



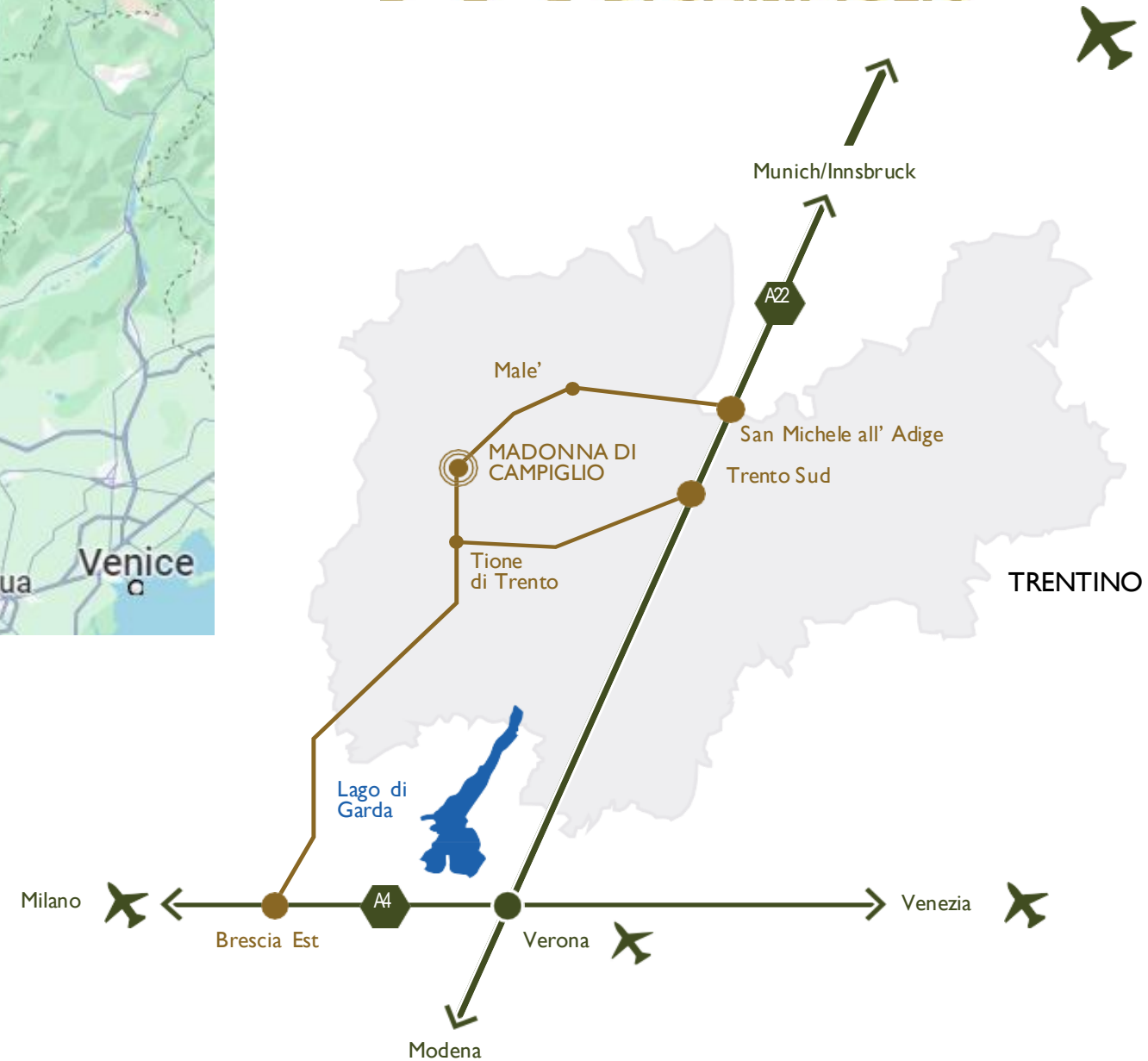
SELECT
HOTELS ♦ RESORTS
TRAVEL LEADERS GROUP

lush *experiences*
CURATE • INSPIRE • INFLUENCE

SERANDIPIANS
By Traveller Made



MADONNA DI CAMPIGLIO



Distances

Verona (VRN): 2 hours 15 minutes

Milano: (MXP): 3 hours 20 minutes

Milano (LIN): 3 hours

Venezia (VCE): 3 hours 20 minutes

Munich (MUC): 5 hours

Trento: 1 hour



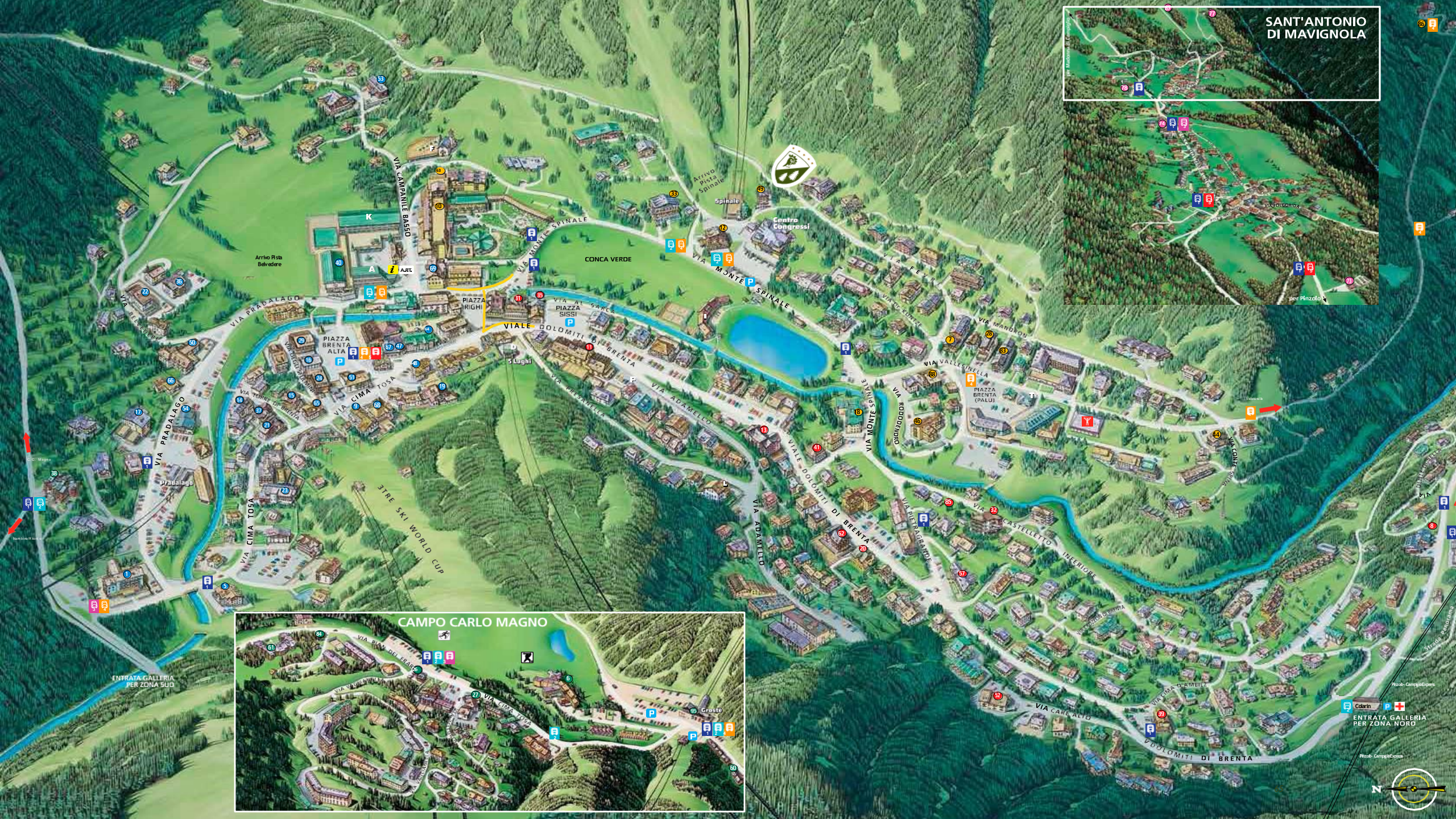
CIMA BRENTA
3190 m

CIMA TOSA
3175 m

PIETRA GRANDE
2936 m



SANT'ANTONIO DI MAVIGNOLA



ENTRATA GALLERIA PER ZONA NORO

Photo: Campi&Corti

Photo: Campi&Corti

Photo: Campi&Corti

Photo: Campi&Corti



Explore Madonna di Campiglio

Discover the fairytale world of Madonna di Campiglio and the Dolomites of Brenta in winter and get a taste of what summer could offer.

WINTER

Madonna di Campiglio is one of the best ski and snowboarding destinations in the Alps. With 70 ski lifts and 150 miles of slopes across 4 resorts connecting 3 valleys, so there is no need to use any bus or shuttle to move around from place to place. Enjoy complimentary skiing as the Ski Area is part of the Epic Pass which also features such acclaimed resorts as Vail, Park City, Whistler, and much more.

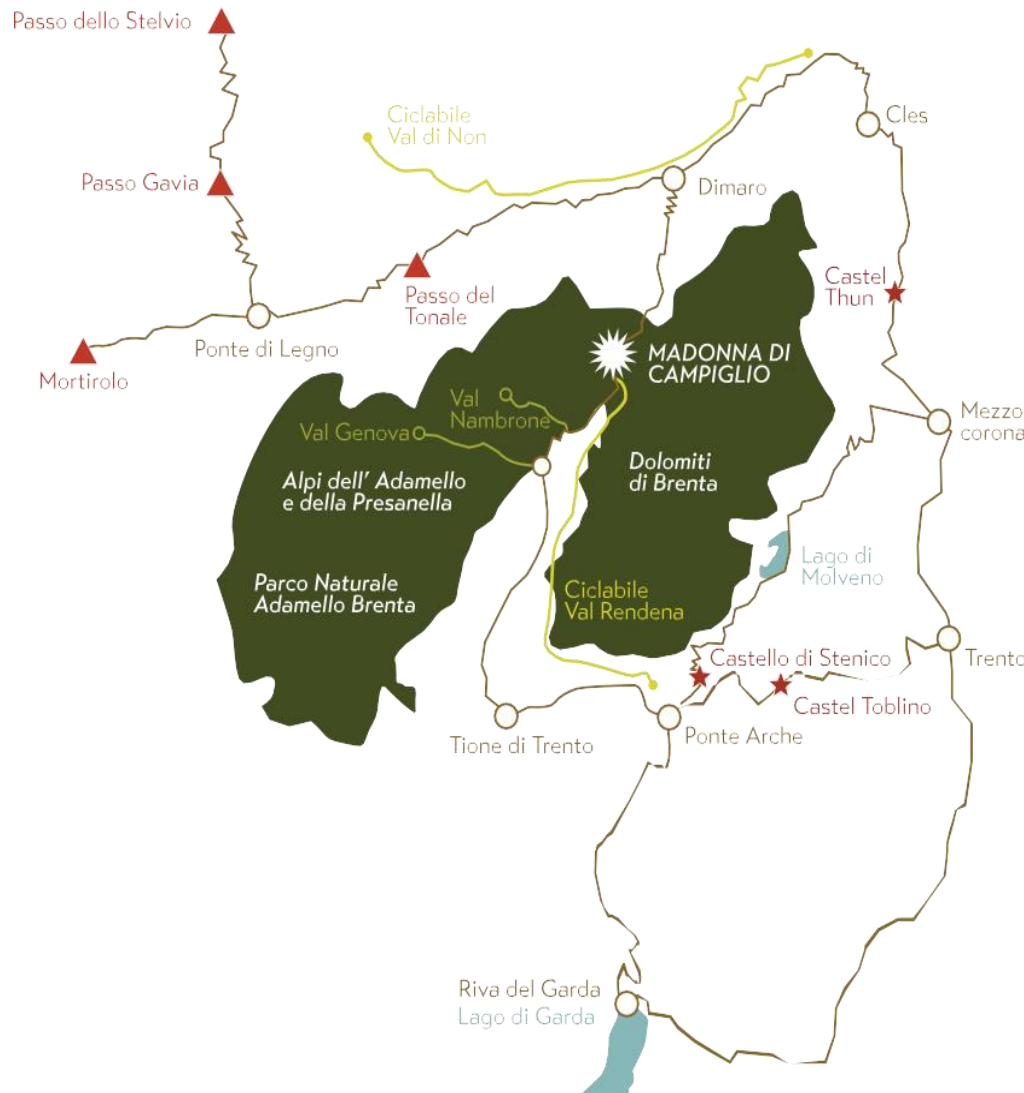
Additional Ski Resort Information: [Skiing in the Region](#) [Epic Pass](#)

SUMMER

Madonna di Campiglio is a paradise for nature and outdoor lovers with endless itineraries for all fitness levels. Guests can enjoy a Trek/Hike/Bike through two world UNESCO Heritage Sites with waterfalls, alpine lakes, majestic peaks and always will be accompanied by spectacular views and untouched nature.

Madonna di Campiglio is within a 1-hour drive of some other regional highlights including Garda Lake. Guests also can visit exceptional vineyards where they will experience top quality wines and olive oil tastings. Within the region you can also discover medieval castles, rural villages, and some of the best nominated "Borghi d'Italia".

[Learn More](#)



























Activities Across the Dolomites



Shopping



Leisure



Mountain bike



Golf



Ski



Fishing



Kids activities



Winter Marathon



Bike



Vie ferrate "Le Bocchette"



Paragliding



Trekking

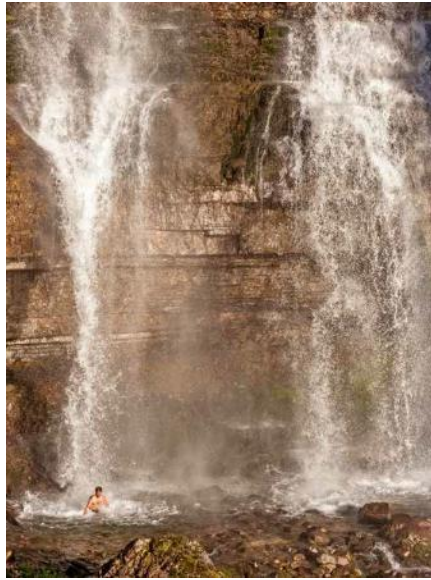


Ski World Cup Stadium



Giro d'Italia

Discover the Natural Beauty and History



Vallesinella Waterfalls



Cima Tosa Peak



Sounds of Dolomites



Aperitif with view



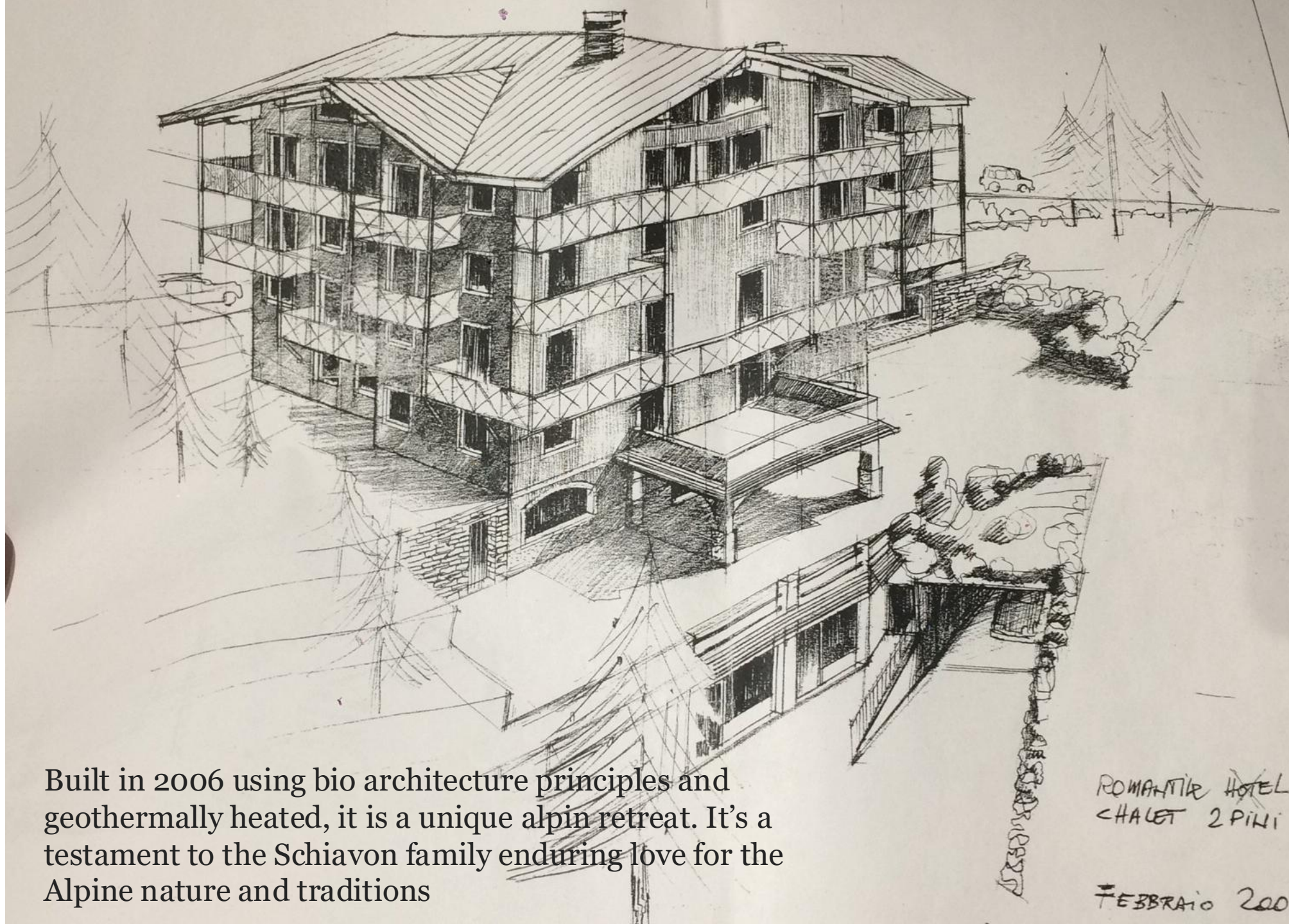
Thun Castle



*World War I:
The Adamello Alps Alpine Group*







Built in 2006 using bio architecture principles and geothermally heated, it is a unique alpin retreat. It's a testament to the Schiavon family enduring love for the Alpine nature and traditions

ROMANTIC HOTEL
CHALET 2 PIANI

FEBBRAIO 2002



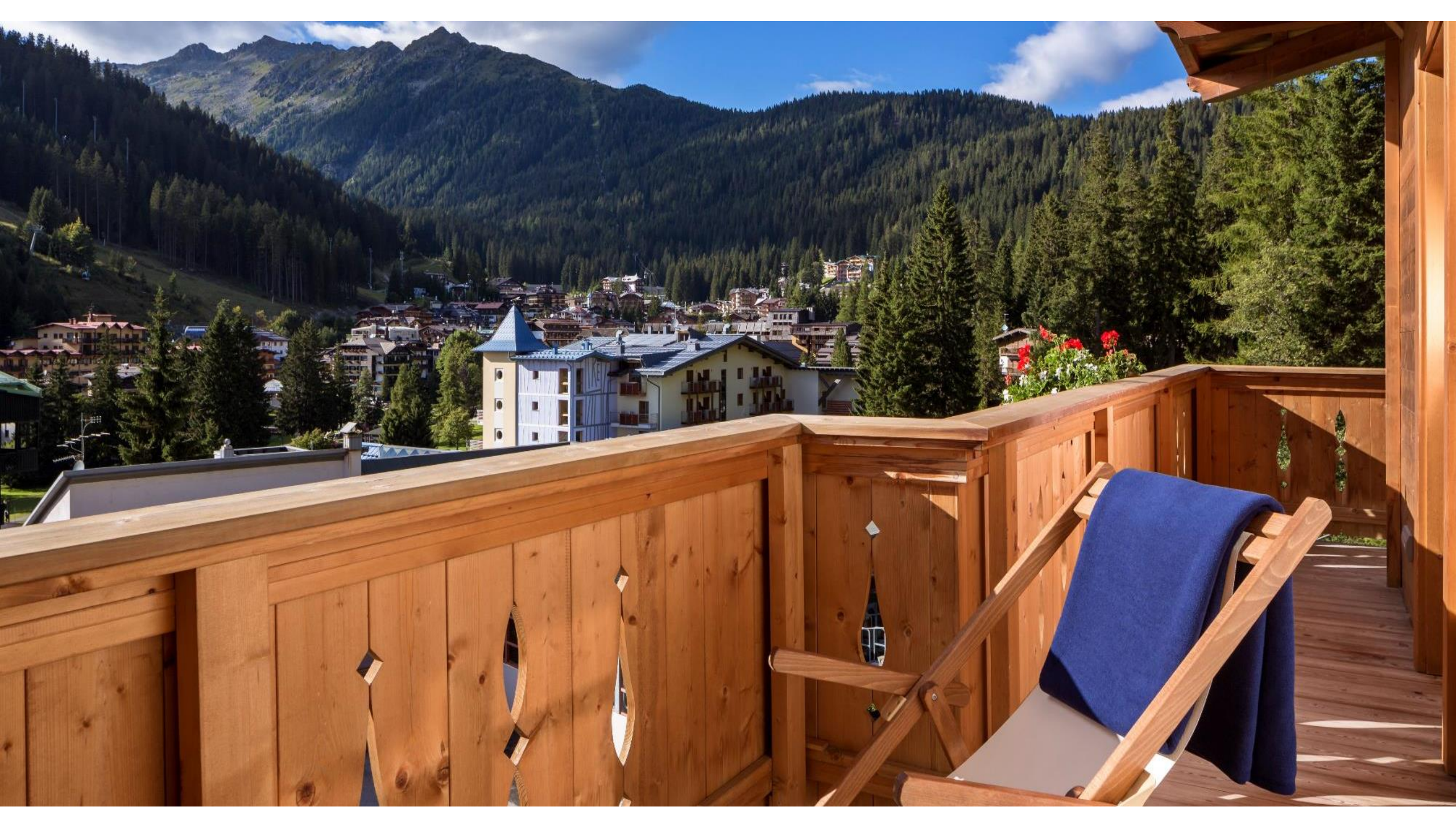
Nature and technology blend harmoniously in this elegant chalet, just a short walk from the center of Madonna di Campiglio and steps away from the ski slopes.

lushexperiences
CURATE • INSPIRE • INFLUENCE



Close to one of the most renowned ski areas in the world, connecting all the slopes of Madonna di Campiglio and boasting ski-in and ski-out

lushexperiences
CURATE • INSPIRE • INFLUENCE





The elegant Bar & Lounge with intricate, handcrafted details from local artisans are seen in every corner.







THE SUITES



18 spacious and distinctive suites are enriched with characteristic alpine style décor inspired by the local flora and fauna. The charm of the mountain environment is felt in each accommodation making it feel like home. The suites are both cozy and elegant, superbly quiet and feature large comfortable bathrooms with hydromassage bath or shower, and a private balcony with stunning views over the mountains.

Luxury Suite of Ciclamimi – 540 sq. ft.



Luxury Suite Panna e verde – 515 sq. ft.





Luxury Suite in Orange – 515 sq. ft.



Comfort Suites in Yellow and Blue – 475 sq. ft.



Junior Suites in Azzurro – 365 sq. ft.

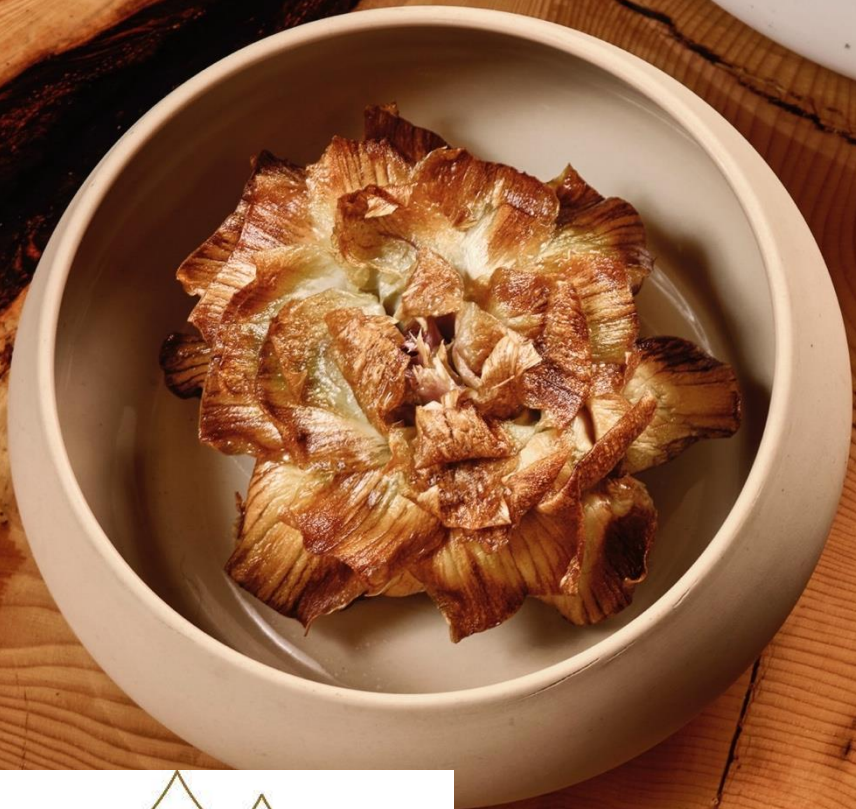




Junior Suites in Red and Green – 344 sq. ft.









Restaurant Due Pini offers a seasonal menu utilizes local ingredients and the tradition of balancing old and new flavors but with a refined modern touch





Wine Cellar offer not only a rich selection of wines produced in the local vineyards of Trentino Alto Adige but also a careful choice of labels from Italy.

lushexperiences
CURATE • INSPIRE • INFLUENCE



THE BREAKFAST



Rich Breakfast Buffet with a wide range of locally produced organic foods

lushexperiences
CURATE • INSPIRE • INFLUENCE







The intimate Stube del Dom offers a light lunch and olive oil and wine tastings with a quiet ambience and only 4 tables.

lushexperiences
CURATE • INSPIRE • INFLUENCE



THE SPA

The Oasi del Sogno Spa is the ideal place to regenerate your mind and body. Includes a Finnish sauna, steam bath, bio sauna, indoor pool and body treatments and massages developed to satisfy all your needs.

lushexperiences

CURATE • INSPIRE • INFLUENCE



Oasi del Sogno

WELLNESS & FITNESS





