

SIX SENSES

ROME



# Ideally located in Piazza San Marcello, off Via del Corso



# History and heritage: Palazzo Salviati-Mellini

At the heart of the city, Six Senses Rome is in Piazza San Marcello, off Via del Corso and just a few steps away from epic landmarks such as the Pantheon and the Trevi Fountain.

It is a forty-minute drive from Fiumicino Leonardo Da Vinci Airport. The Palazzo is named after the two main families who lived there and contributed to its grandeur – the Salviatis and the Mellinis.



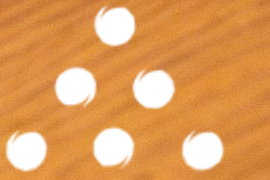
# History and heritage: San Marcello Al Corso Church

Located within the UNESCO World Heritage Site of the Historic Center of Rome, Six Senses Rome is adjacent to San Marcello Al Corso Church, a hidden gem dated back to the sixteenth century.

From 2021 the hotel has sponsored the restoration works of the façade of the church, in the ongoing effort to support the local community and preserve Rome's priceless cultural legacy.







# Interior Design

Designed by renowned architect Patricia Urquiola, Six Senses Rome is a green oasis amidst the hustle and bustle of the city.

Patricia Urquiola has been awarded “Order of Isabella the Catholic” by King Juan Carlos I of Spain. She was inducted into the Interior Design Hall of Fame in 2011.







# BIVIUM

## Restaurant-Cafè-Bar

On the ground floor, the buzzy set of our lifestyle space BIVIUM makes it an excellent destination for an all-around dining experience, or a social hub for networking in the elegant outdoor area.

Serving modern Italian plant-based cuisine with a nod to Roman fare, the menu features locally sourced seasonal ingredients.





# EAT With Six Senses

Eating and vacations go as well together as chili and chocolate. Our food and drinks philosophy is focused on seasonal food, equally nutritious and delicious.

The core beliefs of Eat with Six Senses are natural ingredients, local and sustainable and less is more.

Eat with Six senses takes great care on designing menus, creating culinary experiences and using innovative ways to promote zero waste.







# NOTOS Rooftop

Head to our rooftop for a secret garden escape unlike any other in the heart of Rome, surrounded by plants, terracotta pottery, herb garden, and the comfiest lounge chairs in town!

With an unparalleled view over hidden gems including San Marcello al Corso Church and the Montecitorio bell tower, other famous landmarks, and high-end attico terraces, NOTOS Rooftop in Rome caters to all-day tastes from outdoor dining, Ashtanga at sunrise, and Italian-style aperitivo at sundown.











# 410

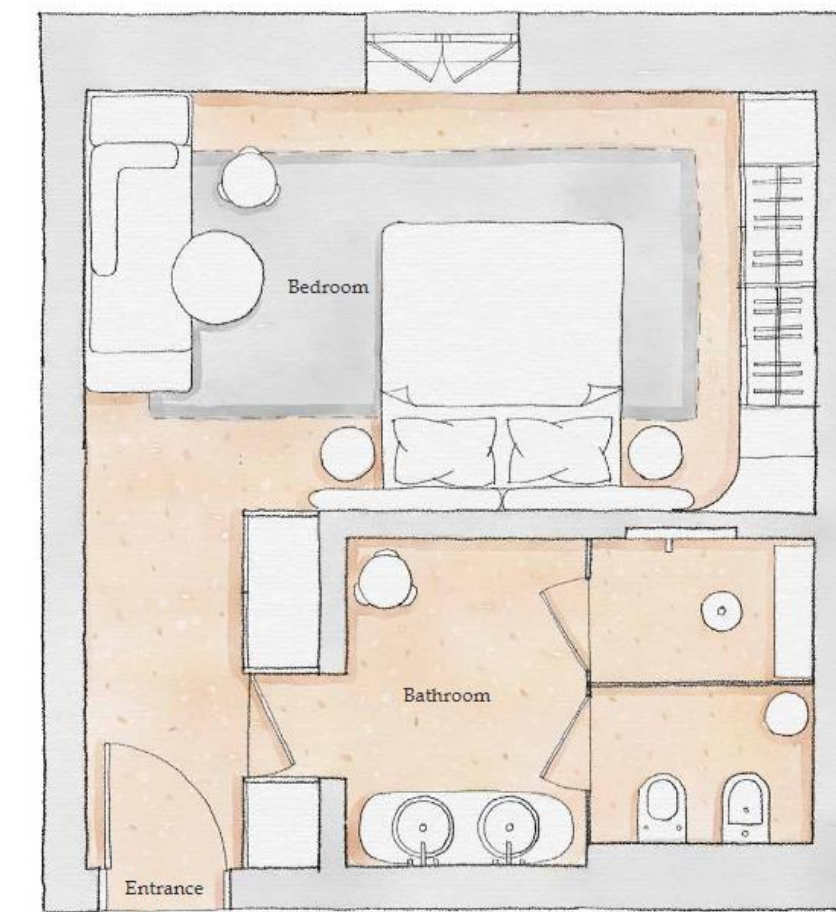


# Guest accommodations

Embellished by traditional *cocciopesto*, plasters and locally sourced Travertine limestones, the hotel features 96 distinct guest rooms and suites. Expect suspended plants, natural light and high ceilings for a breezy, open atmosphere.



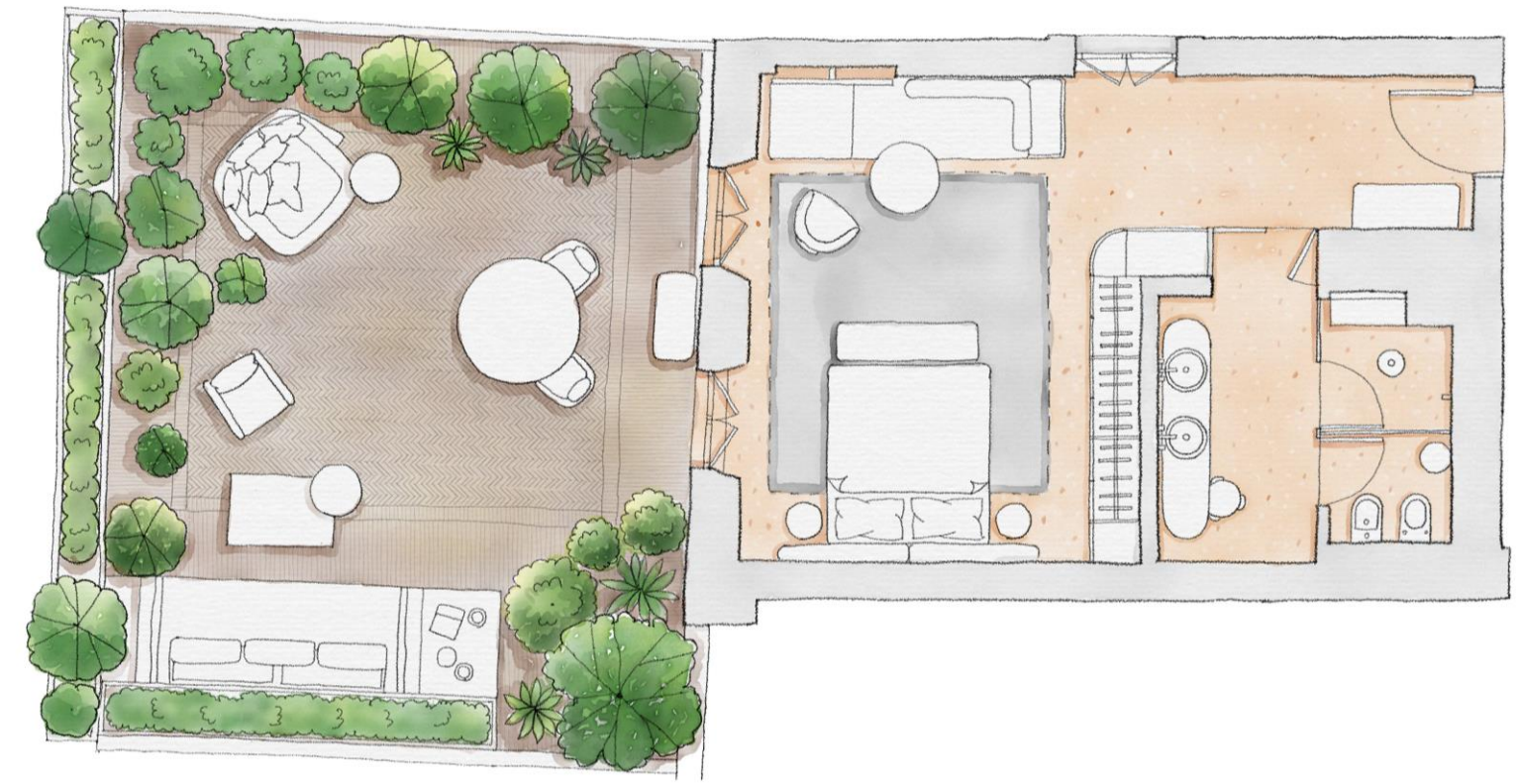
DOUBLE ROOM (CLASSIC | SUPERIOR | DELUXE | SUPERIOR DELUXE)  
King or Queen beds - Double Room categories range from Classic to Superior Deluxe,  
from 300 to 441 sq ft | 28 to 32 sq.m.



JUNIOR SUITE - DELUXE JUNIOR SUITE - TERRACE JUNIOR SUITE

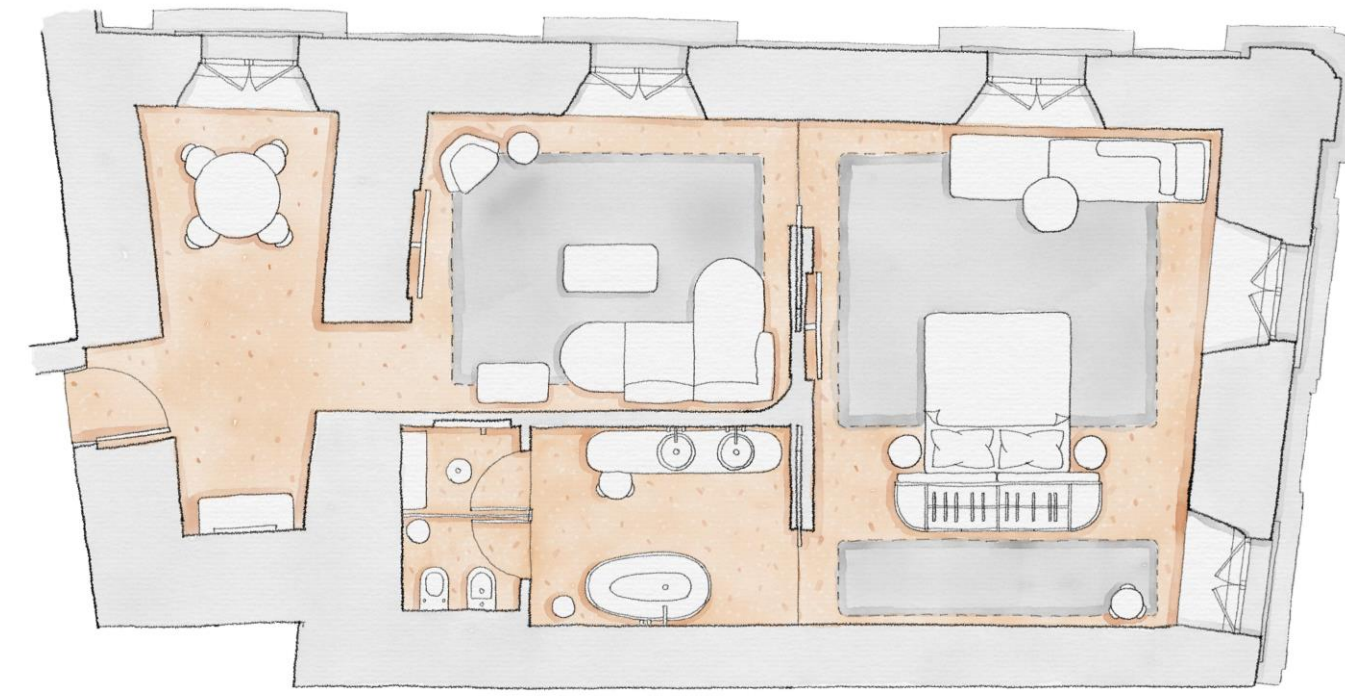
King Bed or 2 Twin beds – range from 435 to 527 sq.ft. | 40,5 to 56 sq.m

Terrace Junior suites with private outdoor terraces from 430 to 907 sq.ft. | 40 to 75 sq.m



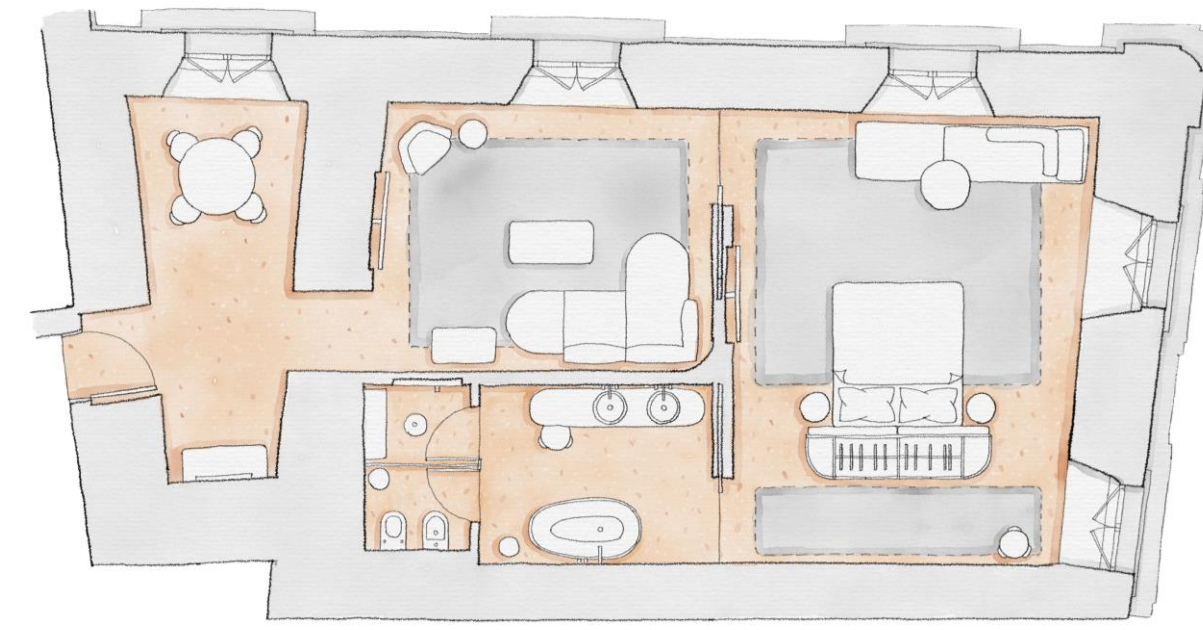
DELUXE SUITE - CORNER SUITE

King bed – range from 540 to 872 sq.ft. | 50 to 81 sq.m



DELUXE SUITE - CORNER SUITE

King bed – range from 540 to 872 sq.ft. | 50 to 81 sq.m





TWO BEDROOMS SUITE MELLINI AREA 112 SQ. MQ | 1,206 SQ.FT

King beds in both rooms - Kitchenette

Views over the main Courtyard, Piazza San Marcello and Via del Corso



TWO BEDROOMS SUITE MELLINI -TERRACE AREA 28 SQ. MQ | 291 SQ.FT  
Views over the Church of Saint Marcello,Piazza San Marcello and Via del Corso



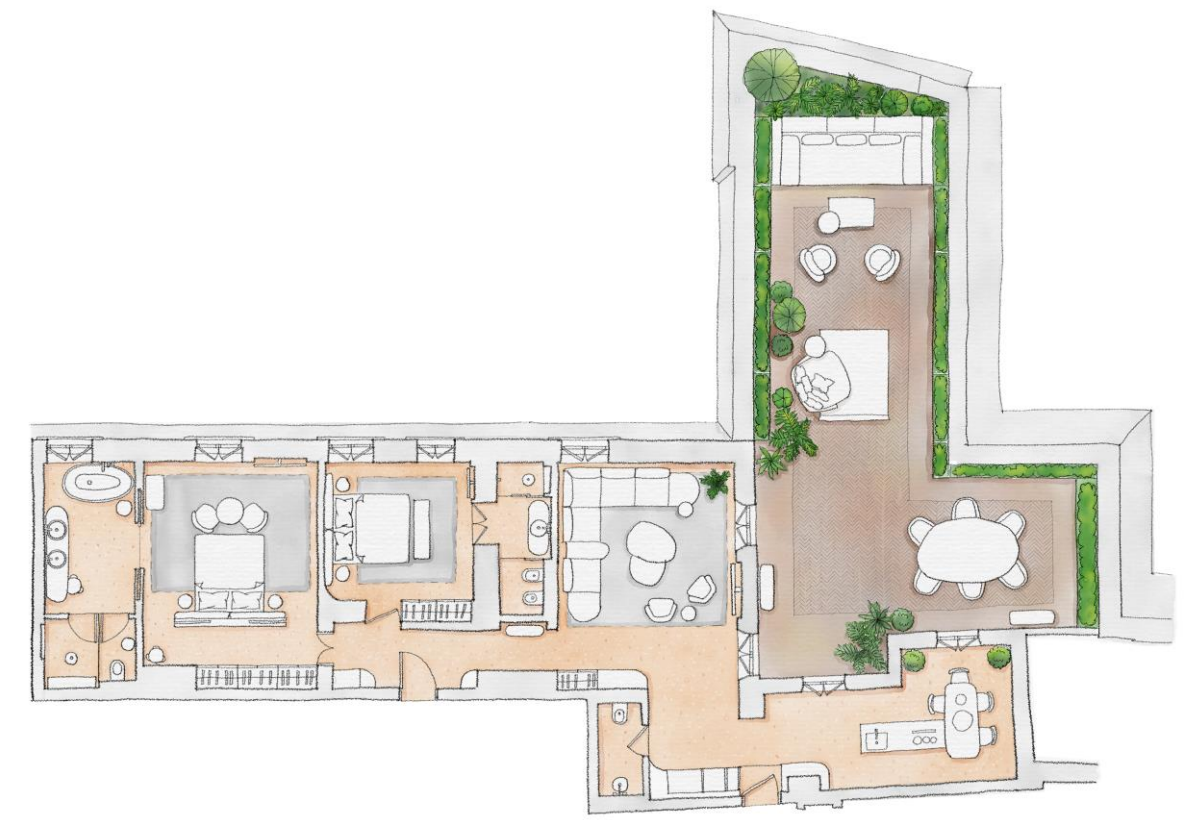
TWO BEDROOMS SUITE LATA AREA 126 | 1,356 SQ.FT

King beds in both rooms - Kitchenette

Views over the main courtyard, Piazza San Marcello and Via del Corso



TWO BEDROOMS SUITE LATA - TERRACE AREA 96,5 SQ. MQ | 1,033 SQ.FT  
Views over the Church of Saint Marcello, the main courtyard, Piazza San Marcello and Via del Corso



# Six Senses Spa – Roman Baths

For a referential nod to the ancient art of Roman bathing, the three plunge pools in our Six Senses Spa reproduce the *caldarium*, *tepidarium* and *frigidarium*, boosting the wellness of the body by warming it up and cooling it down.





CALDARIUM

TEPIDARIUM





# Six Senses Spa – Treatments and biohacking

Additional highlights include five treatment rooms (one for couples), the high-tech biohacking area, flying yoga and meditation spaces, and much more.









# Alchemy Bar

A place to learn to harness the real (super) power of herbs, plants, and ingredients.

This is a space dedicated to learning and fun, where skilled Spa therapists guide guests through a variety of locally sourced ingredients and products in private or group workshops.



## Earth Lab

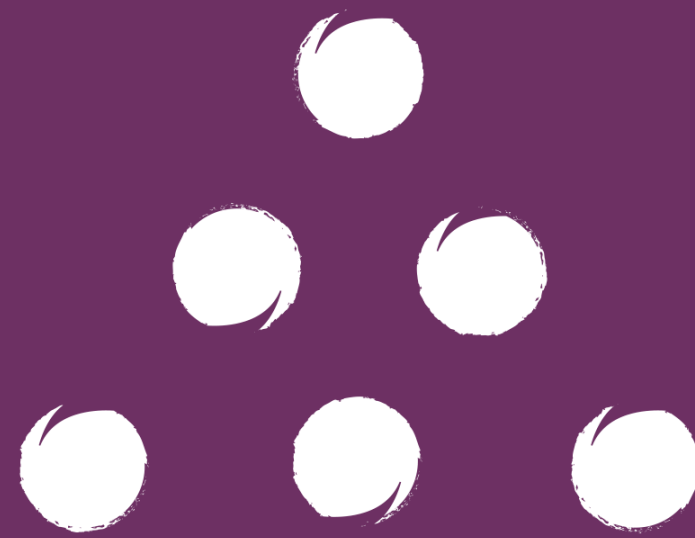
A multifunctional space where we showcase our efforts to reduce our footprint and communicate our achievements on and off-site.

All guests are welcome to join our sustainability-themed activities and learn more about our philosophy from the direct voice of our experts and brand ambassadors.

Earth Lab available for private dining and small meetings







SIX SENSES

ROME